

“OF GREEN LEAF, BIRD, AND FLOWER”: ARTISTS’ BOOKS AND THE NATURAL WORLD

Yale Center for British Art: May 15–August 10, 2014

Press Contact: +1 203 432 2853 | julienne.richardson@yale.edu



1.



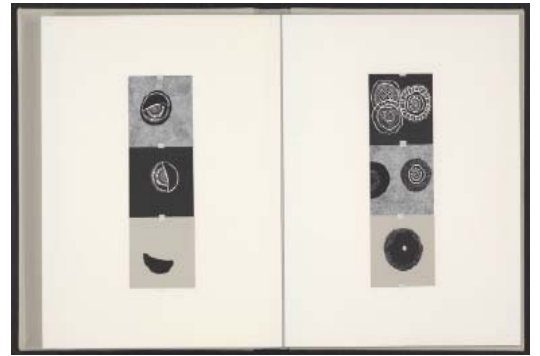
2.



3.



4.



5.



6.



7.



8.

Yale Center for British Art: May 15–August 10, 2014

Press Contact: +1 203 432 2853 | julienne.richardson@yale.edu



9.



10.



11.



12.



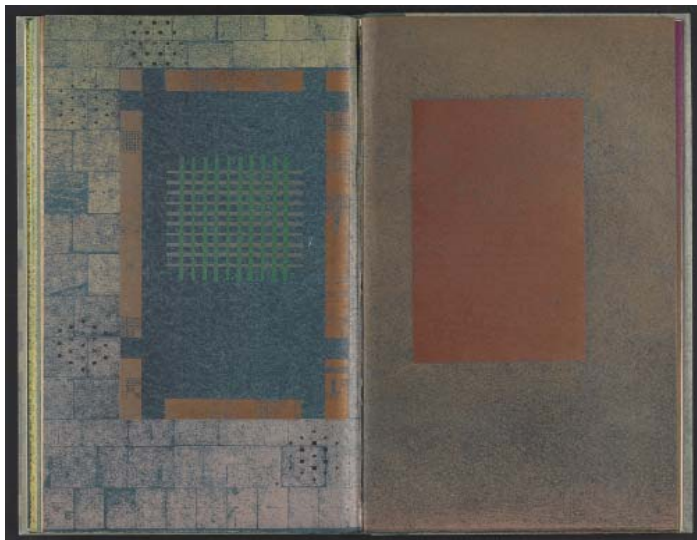
13.



14.



15.



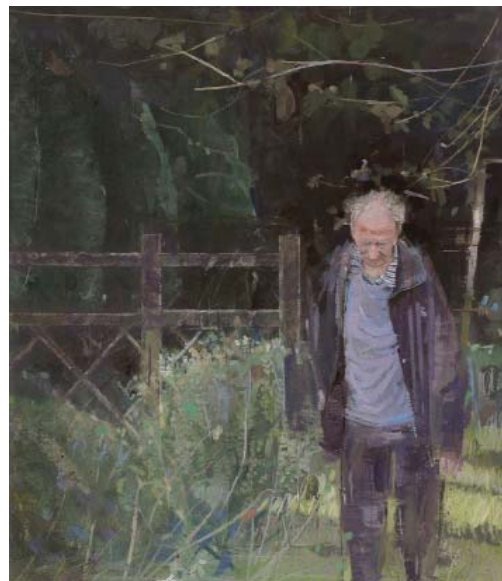
16.



17.



18.



19.

IMAGE CREDITS

1. “Blackbere” from *Helmingham Herbal and Bestiary* (detail), ca. 1500, watercolor and gouache on parchment, Yale Center for British Art, Paul Mellon Collection
2. Rosaleen Wain, “Blackberry” (detail), etching with colored aquatint, from *A Printmaker’s Flora: an Anthology of the Names of British Wild Flowers*, (Devon: Dartington Hall, Dartington Printmakers, 1996), Yale Center for British Art, Friends of British Art Fund
3. Unknown maker, Basket, ca. 1820, silk thread, cut paper and watercolor, Yale Center for British Art, Paul Mellon Fund

Yale Center for British Art: May 15–August 10, 2014

Press Contact: +1 203 432 2853 | julienne.richardson@yale.edu

IMAGE CREDITS (CONTINUED)

4. John Dilnot, *Weeds and Pests* (detail), 2009, screenprint, Yale Center for British Art, Friends of British Art Fund
5. Mandy Bonnell, *Bethany Seeds*, (London: EMH Arts, 2013), wood engraving, Yale Center for British Art, Friends of British Art Fund
6. Unknown collector, "The Butter Cup," natural specimens with pen and ink mounted on paper, from *Album of Pressed Wild Flowers*, 1882-1899, Yale Center for British Art, Paul Mellon Fund
7. Jane Hyslop, *Herbarium Series: Buttercup*, 2009, colored etching, cut out and mounted on sheet, Yale Center for British Art, Friends of British Art Fund
8. Ellen W., *Album of Cut Paper Flowers, England*, ca. 1835, cut paper, Yale Center for British Art, Paul Mellon Fund
9. James Bolton, one of twenty drawings depicting specimens from the natural history cabinet of Anna Blackburne, ca. 1768, watercolor and gouache over graphite on parchment, Yale Center for British Art, Paul Mellon Fund, in honor of Jane and Richard C. Levin, President of Yale University (1993-2013)
10. John Dilnot, *Bishops Wood*, 2013, natural specimens, found objects, and cut paper, in glass-topped wooden box, Yale Center for British Art, Friends of British Art Fund
11. Sarah Morpeth, *Crow Landscape*, 2008, cut paper, wire, and acrylic ink, Yale Center for British Art, Friends of British Art Fund
12. Julie Cockburn, *Beetles Book*, 2002, altered book, Yale Center for British Art, Friends of British Art Fund
13. Four Victorian microscope slides, (zoophytes, shells, and seaweed from Yarmouth), ca. 1860, paper, glass, pen and ink, with natural specimens, Yale Peabody Museum of Natural History
14. Unknown artist, "Camberwell Beauty" from *Album of drawings of English moths, butterflies, flowers, and mollusks, 1805-1822*, pen and ink and watercolor, Yale Center for British Art, Paul Mellon Fund
15. Tracey Bush, *British Butterflies: Museum Box, no. 1*, 2004, cut paper, mounted with specimen pins, in glass-topped cardboard box, Yale Center for British Art, Paul Mellon Fund
16. Ken Campbell, *Father's Garden*, (London, 1989), letterpress, Yale Center for British Art, Friends of British Art Fund
17. Simon Basyll, *Survey of Hertford Castle*, 1608, pen and ink with watercolor and gouache on parchment, Yale Center for British Art, Paul Mellon Collection
18. George Edwards, *Yellow-eyed Babbler (Chrysomma sinense) perched on Chinese hat plant (Holmskioldia sanguinea)*, formerly *Red-Eyed Nightingale*, eighteenth century, watercolor with gouache and pen and ink over graphite on paper, Yale Center for British Art, Paul Mellon Collection
19. Eileen Hogan, *Ian Hamilton Finlay*, 2012, oil paint and charcoal on paper, mounted on card, Collection of the artist

Photo Editor: If the full image is not used, please indicate that it is a detail.