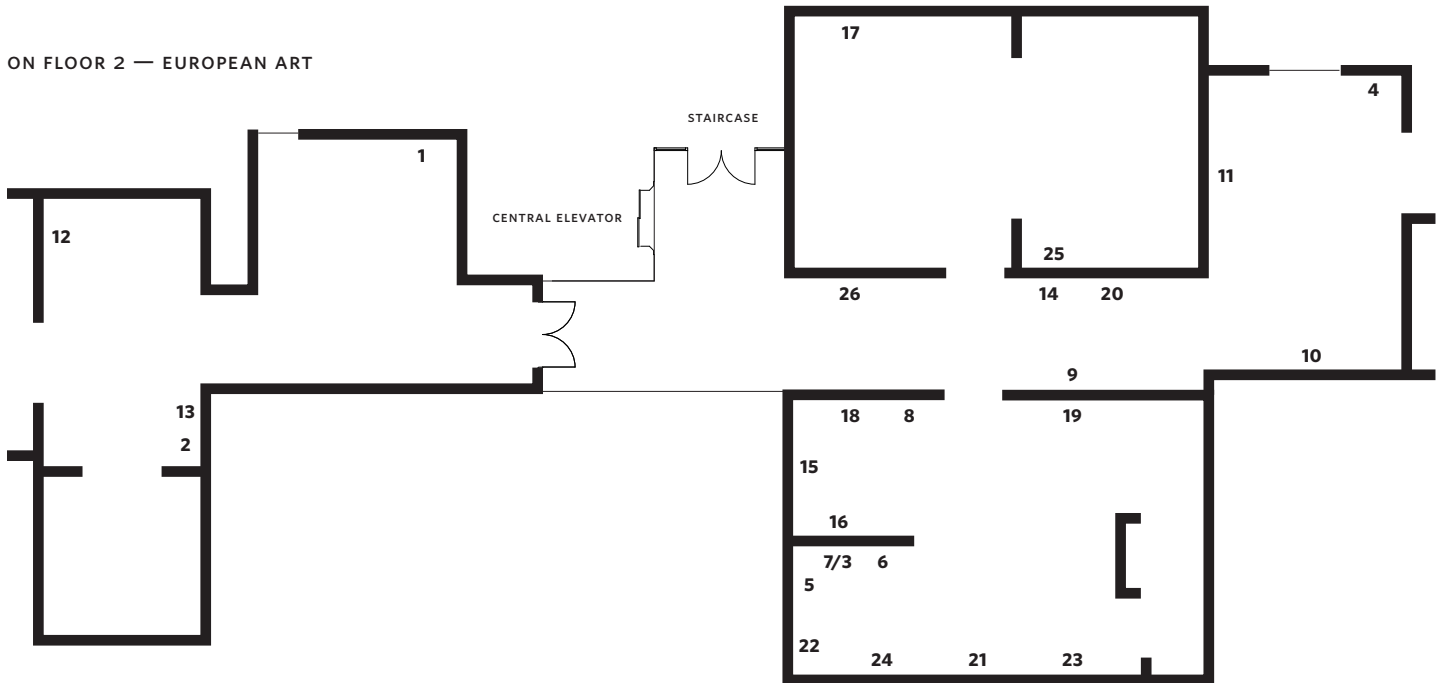


ON FLOOR 2 — EUROPEAN ART



POMPEO BATONI

- 1 *James Caulfeild, Fourth Viscount Charlemont (later First Earl of Charlemont), 1753–56*

MARY BEALE

- 2 *Bartholomew Beale, 1663–64*

RICHARD PARKES BONINGTON

- 3 *Beached Vessels and a Wagon near Trouville, ca. 1825*

- 4 *Calais Jetty, France, ca. 1824*

- 5 *Corso Sant'Anastasia, Verona, 1828*

- 6 *A Fish-Market near Boulogne, 1824*

- 7 *Near Quillebeuf, 1824–25*

FORD MADOX BROWN

- 8 *The Irish Girl, 1860*

CANALETTO

- 9 *Warwick Castle, 1748–49*

JOHN CONSTABLE

- 10 *Hadleigh Castle, the Mouth of the Thames — Morning after a Stormy Night, 1829*

- 11 *Stratford Mill, 1819–20*

THOMAS GAINSBOROUGH

- 12 *Mary Little, later Lady Carr, ca. 1765*

WILLIAM HOGARTH

- 13 *Self-Portrait, ca. 1735*

THOMAS LAWRENCE

- 14 *George James Welbore Agar-Ellis, later First Baron Dover, 1823–24*

FREDERIC LEIGHTON

- 15 *Ellinor Guthrie (née Stirling), 1865*

JOHN EVERETT MILLAIS

- 16 *L'Enfant du Régiment, 1854–55*

PETER PAUL RUBENS

- 17 *Peace Embracing Plenty, 1633–34*

FREDERICK SANDYS

- 18 *Grace Rose, 1866*

GEORGE STUBBS

- 19 *Reapers, 1795*

- 20 *Turf, with Jockey Up, at Newmarket, ca. 1766*

JOSEPH MALLORD WILLIAM TURNER

- 21 *Dort or Dordrecht: The Dort Packet-Boat from Rotterdam Bealmed, 1818*

- 22 *Inverary Pier, Loch Fyne: Morning, ca. 1845*

- 23 *Staffa, Fingal's Cave, 1831–32*

- 24 *Wreckers — Coast of Northumberland, with a Steam-Boat Assisting a Ship off Shore, 1833–34*

WILLEM VAN DE VELDE THE YOUNGER

- 25 *An Action between English Ships and Barbary Corsairs, ca. 1695*

JOSEPH WRIGHT OF DERBY

- 26 *The Blacksmith's Shop, 1771*

JAMES MCNEILL WHISTLER

- Nocturne in Blue and Silver, 1872–78, butterfly added ca. 1885*
(ON VIEW ON FLOOR 2E — AMERICAN ART BEFORE 1900)